

Chemtrol™ CT

PROGRAMMABLE CONTROLLERS

**AUTOMATED
WATER TREATMENT**

for Cooling Towers, Boilers & Wastewater

The **CHEMTROL™ CT** Programmable Controllers use an advanced microprocessor-based technology that introduces a new standard of sophistication in automated water treatment. Applications include cooling towers, boilers, industrial process water, food processing, drinking water & wastewater treatment.

KEY FEATURES

- ✓ **CONDUCTIVITY** control with choice of bleed programs
- ✓ **pH** control with automatic acid and base feed
- ✓ **ORP** control for oxidizing biocide
- ✓ **TEMPERATURE** monitoring
- ✓ **LANGELIER SATURATION INDEX** for water balance
- ✓ Make-up & Bleed **WATER FLOWMETERS**
- ✓ **ADDITIVE FEED PROGRAMS** (inhibitor, biocide, etc.)
- ✓ **FILTER CONTROL** with choice of backwash programs
- ✓ **ON_BOARD DATA LOGGING** with adjustable intervals
- ✓ **REMOTE COMPUTER OPERATION** under *Windows™*



THE CHEMTROL™ ADVANTAGE

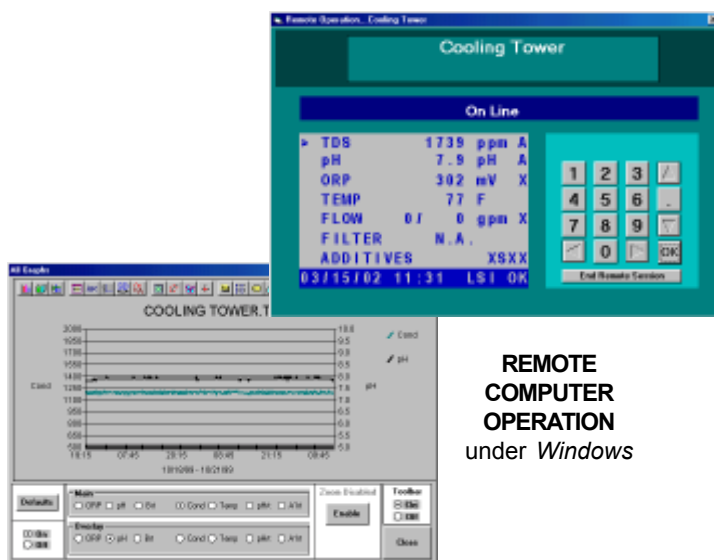
- ✓ 5-Year Electronic Warranty
- ✓ Large screens with easy-to-use menus and submenus
- ✓ True duplex remote operation with *Windows™* graphics display
- ✓ Dynamic probe testing with sensor failure warning
- ✓ Choice of 1, 2 or 3-point calibration for all sensors
- ✓ Multiple facilities on single phone line
- ✓ Strong dealer support program

SIMPLE AND RELIABLE

The **CHEMTROL™ CT** series are easy to install and operate. All menus are displayed on a large LCD graphic display with choice of English, French or Spanish and US or metric units. Entries are made on the 16-key front panel keypad. Each unit is supplied with a complete 40-page instruction manual and a FIVE-YEAR electronics warranty.

EXPERT TECHNICAL SUPPORT

Expert technical support - based on more than 20,000 installations worldwide since 1976 - is available by toll-free phone, fax or e-mail. With Remote Operation, direct support is available on-line from the factory and from numerous **CHEMTROL™** Qualified Dealers.



Visit our Web Site at www.sbcontrol.com or call today for a free demo CD-ROM



SANTA BARBARA CONTROL SYSTEMS

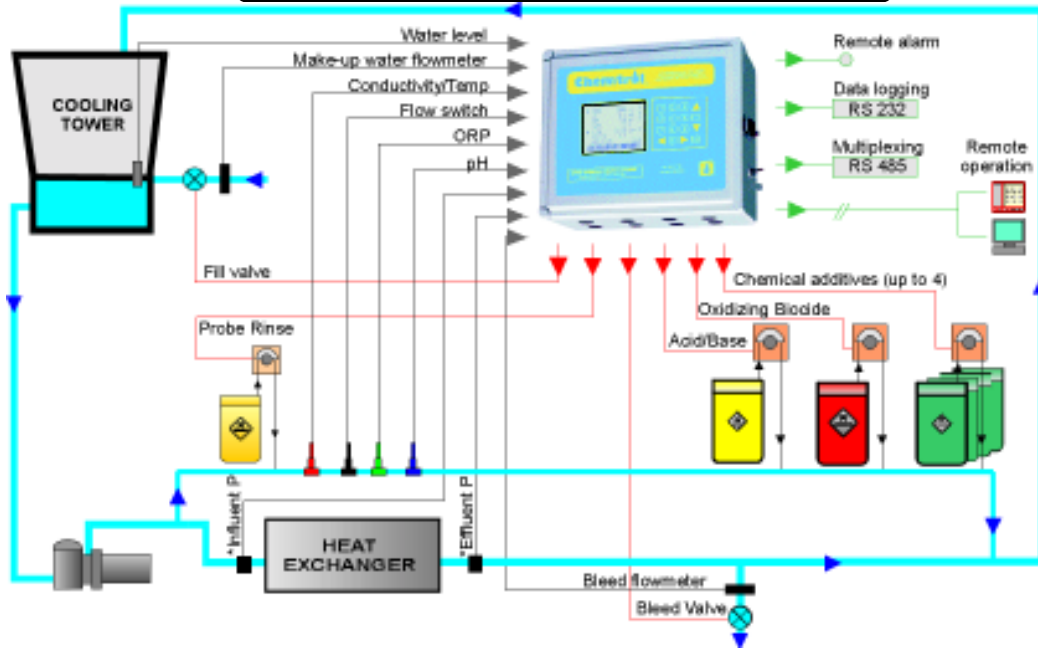
5375 Overpass Road
Santa Barbara, CA 93111 - USA

TOLL-FREE
PHONE
FAX
INTERNET

800-621-2279
805-683-8833
805-683-1893
www.sbcontrol.com

Leading in Automated Water Treatment Since 1976

COOLING TOWER INSTALLATION



SPECIFICATIONS

CONDUCTIVITY / TDS	0-20,000 $\mu\text{S}/\text{cm}$
pH	0-14
ORP	0-999 mV
TEMPERATURE	Programmable shock treatment
SENSOR CALIBRATION	0 to 140 F (-18 to 60C)
CONTROL MODES	1, 2 or 3 points Off, Manual, Auto, Timer Bleed-then-Feed % of watermeter flow Daily schedule
LANGELIER INDEX	water balance display
ALARMS	High/Low out-of-range Overfeed and Total run time Patented Probe Alert* Safeguard Visual, audio and external alarms
DATA LOGGING	On-board memory for 999 tests RS232 communication port for local download and printing
NETWORKING	RS485 port for multiple connections
REMOTE OPERATION	Data communication modem CHEMCOM™ remote software and graphical display under Windows™ Telephone voice communication
ELECTRICAL	10 A / 110 or 230 V with selector switch All output relays 5 A
WARRANTY	5-year electronics 1-year sensors
MECHANICAL	NEMA 4X fiberglass cabinet
CT2000	11.21x9.21x6.09" (285x234x155 mm)
CT3000	13.21x11.21x6.59" (336x285x167 mm)
CT6000	15.21x13.21x7.09" (386x336x180 mm)
SHIPPING	
CT2000	16x16x12" (41x41x31cm) carton - 13 lbs (6.0 kg)
CT3000	19x19x11" (47x47x27cm) carton - 18 lbs (8.2 kg)
CT6000	24x18x18" (61x46x46cm) carton - 28 lbs (12.7 kg)

MODEL SELECTION

FEATURES	CT2000	CT3000	CT6000
CONTROL RELAY OUTPUTS	4	8	14
CONDUCTIVITY DISPLAY & CONTROL	yes	yes	yes
TEMPERATURE DISPLAY	yes	yes	yes
pH DISPLAY & CONTROL	option	option	yes
ORP DISPLAY & CONTROL		option	yes
WATERMETER TOTALIZERS		2	2
CHEMICAL FEED PROGRAMS	3	4	4
CHEMICAL LEVEL ALARM	yes	yes	yes
SAFETY FLOW SWITCH	option	option	yes
AUTOMATIC PROBE RINSE		yes	yes
LEVEL & MAKEUP VALVE CONTROL		option	yes
INFLUENT/EFFLUENT PRESSURES		option	yes
CORROSION RATE MONITORING		option	option
AUTOMATIC FILTER BACKWASH			yes
REMOTE ALARM		yes	yes
DATALOGGING & SERIAL DOWNLOAD	yes	yes	yes
REMOTE COMPUTER CONTROL	option	option	yes
TELEPHONE COMMUNICATION		option	yes
B.M.S. COMMUNICATION		option	option

REPRESENTED BY:

