

Chemtrol[®] PC2000

PROGRAMMABLE CONTROLLER

ORP / pH CONTROL
with Duplex Remote Control
and Probe Alert™ Safeguard*

* U.S. Patent 5,895,565

Chemical Automation is now recognized as a must for many applications such as swimming pools, spas, cooling towers and industrial water treatment. With its advanced microprocessor-based technology, the **CHEMTROL[®] PC2000** Programmable Controller introduces a new standard of sophistication in automated control of sanitizers (chlorine or bromine), oxidizers and pH.

STANDARD FEATURES

- ✓ **ORP CONTROL** of sanitizer and/or oxidizer activity,
- ✓ **pH CONTROL** with choice of acid or base feed,
- ✓ Programmable **SHOCK TREATMENT** and **CHEMICAL SAVINGS** cycles,
- ✓ **LANGELIER SATURATION INDEX** for water balance,
- ✓ **AUTOMATIC DATA LOGGING** for up to 999 tests,
- ✓ **FULL SCREEN MENUS** in English, French or Spanish,
- ✓ Screen displays in **US** or **METRIC UNITS**,
- ✓ COMPATIBLE with all **COMMON SANITIZERS AND OXIDIZERS**,
- ✓ NOTE: Not recommended with electrolytic chlorine generators.

OPTIONS

- ✓ **SANITIZER CONCENTRATION** display in ppm or mg/l,
- ✓ Programmable **HEATER** control,
- ✓ **CONDUCTIVITY** or **TOTAL DISSOLVED SOLIDS (TDS)** control,
- ✓ **REMOTE COMPUTER OPERATION** and **GRAPHIC DATA DISPLAY** under *Windows*[™].

SIMPLE AND RELIABLE

The **CHEMTROL[®] PC2000** is a user-friendly and reliable controller that is easy to install and operate. All menus are displayed in clear language in English, French or Spanish with choice of US or metric units. Every unit is supplied with a comprehensive operation manual plus on-site start-up and training by a Qualified Dealer and a **FIVE-YEAR electronics warranty**.

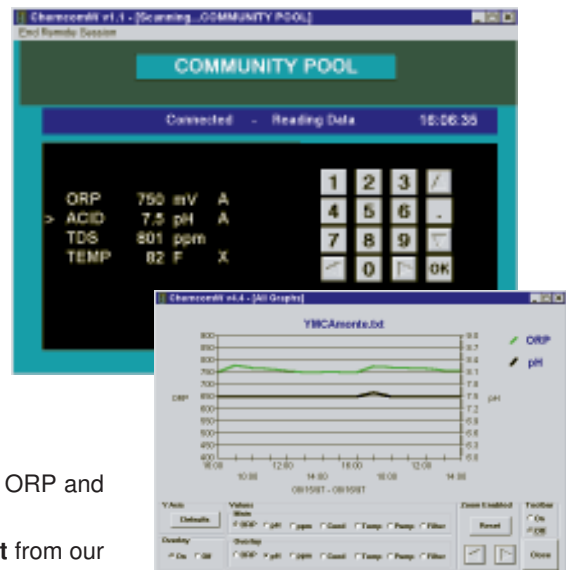
EXTENDED TECHNICAL SUPPORT

The cost and frustration of service calls and downtimes are greatly reduced with two proprietary features of the **CHEMTROL[®] PC2000**:

- the patented **Probe Alert Safeguard*** constantly monitors the response of the ORP and pH probes and alerts the operator in case of probe failure,
- the **CHEMCOM_{TM}** Program for *Windows*[™] allows **immediate technical support** from our Service Department or from a Qualified Dealer by remote computer with true duplex operation.

Technical support from **CHEMTROL[®]** is based on our experience with over 30,000 installations worldwide. It is also available by toll-free phone, by fax or by e-mail.

Visit our Web Site at www.sbcontrol.com or call today for a free demo CD.



REMOTE COMPUTER OPERATION
and **GRAPHIC DATA DISPLAY**
under *Windows*

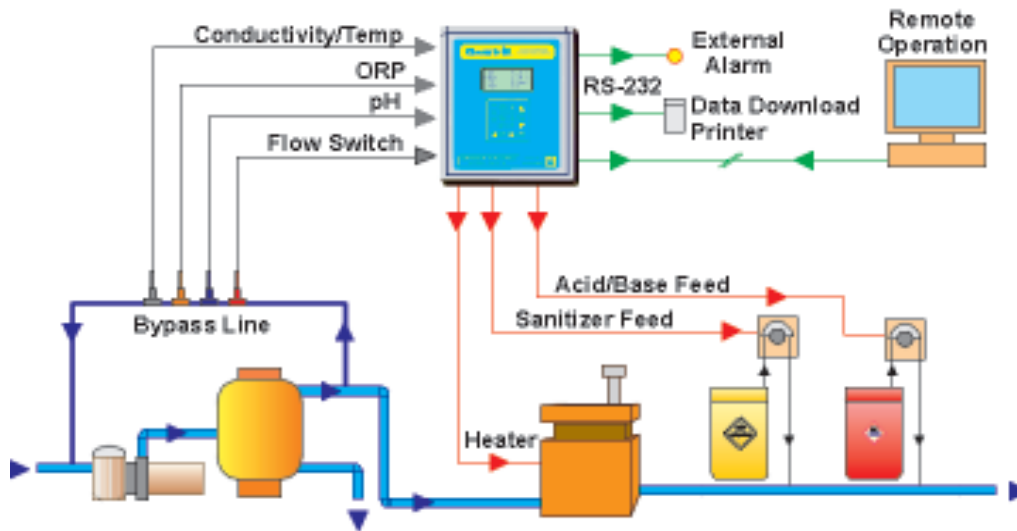


SANTA BARBARA CONTROL SYSTEMS
5375 Overpass Road
Santa Barbara, CA 93111 - USA

TOLL-FREE PHONE 800-621-2279
PHONE 805-683-8833
FAX 805-683-1893
INTERNET www.sbcontrol.com

Leading in Automated Water Treatment Since 1976

POOL/SPA INSTALLATION



SPECIFICATIONS

ORP CONTROL	200-999 mV Setpoint for oxidizer or reducer Programmable shock treatment and chemical saving cycles
pH CONTROL	0-14 Setpoint for acid or base feed
CONDUCTIVITY MONITORING	0-20,000 $\mu\text{S}/\text{cm}$ or ppm Conversion Factor for TDS
TEMPERATURE READOUT	0 to 140 F (-18 to 60C)
LANGELIER INDEX	Calculated from pH, Temp, Total Alkalinity and Calcium Hardness Water Balance display
SENSOR CALIBRATION	1, 2 or 3 points
CONTROL MODES	Off, Manual, Automatic, Timer ON/OFF or Proportional Feed
DATA LOGGING	On-board memory for 999 tests RS232 communications port
ALARMS	High / Low out-of-range Run time and overfeed Patented Probe Alert* Safeguard Visual, audio and external alarms
REMOTE OPERATION	Data communication modem CHEMCOM™ remote software and graphical display under Windows™
MULTIPLEXING	RS485 port for multiple connections
MECHANICAL	6x9 x 11in. (15x23 x 29 cm) fiberglass cabinet
ELECTRICAL	Rain and splatter proof NEMA Type 3R 10 A / 110 or 230 V with selector switch All output and alarm relays 5 A
WARRANTY	5-year electronics 1-year sensors
SHIPPING	16 x 16 x 12 in. (41X41X31 cm) carton 16 lbs (7 kg)

MODEL SELECTION

STANDARD FEATURES

- ✓ ORP CONTROL
- ✓ pH CONTROL
- ✓ LANGELIER SATURATION INDEX
- ✓ AUTOMATIC DATA LOGGING
- ✓ REMOTE ALARM
- ✓ RS232 FOR DIRECT DOWNLOAD

OPTIONS

- FLOW CELL ASSEMBLY
- HEATER CONTROL
- CONDUCTIVITY/TDS CONTROL
- AUTO FILL FOR SALT GENERATORS
- PPM SANITIZER DISPLAY
- REMOTE COMPUTER OPERATION
- BYPASS LINE ASSEMBLY
- SENSOR CELL ASSEMBLY
- RS485 FOR MULTIPLEXING
- AUTODIALER FOR ALARMS

REPRESENTED BY: