

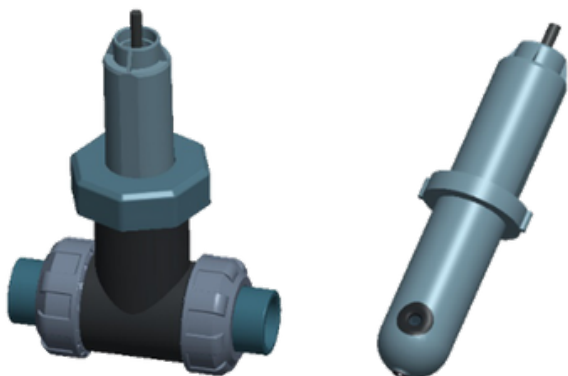
Pyxis ST-500 Inline PTSA Fluorometer Probe

The Pyxis ST-500 inline fluorometer probe measures the concentration of fluorescence tracer PTSA (pyrenetetrasulfonic acid) in water. It can be simply inserted to the compression fitting port of a custom-made tee. The companion tee has two 3/4 inch female NPT ports and can be placed to an existing 3/4 inch sample water line. The 4-20mA current output of the ST-500 probe can be connected to any controller that accepts an isolated or non-isolated 4-20mA input. The ST-500 probe is a smart device. In addition to measuring fluorescence, the ST-500 probe has extra photo-electric components that monitor the color and turbidity of the sample water. This extra feature allows automatic color and turbidity compensation to eliminate interferences common in real-world samples.



Features of the Pyxis ST-500

- Easy calibration using any mobile device
- Automatic compensation for turbidity up to 150 NTU and color created by up to 10 ppm iron or equivalent to 10 ppm humic acid.
- Diagnostic information (probe fouling, color or turbidity over range, failure modes) available upon request
- The ST-500 probe can be easily removed from the system without the need of any tools for being cleaned



Specifications

- PTSA Range: 0 to 300 ppb, precision 0.2 ppb (3 sigma)
- Power Supply 24 (±2) VDC, 65 mA
- Signal Output 4-20 mA and RS-485 Modbus RTU
- Storage Temperature -7 °C – 60 °C
- Operational Temperature 4 °C – 40 °C
- Sample Pressure 100 PSI
- Protection Grade IP67, Fully Dustproof & Waterproof
- Regulation CE
- Dimension : Length 172.7 mm, body diameter 36.6 mm
- Weight 170 g
- Cable Length 5 feet, terminated with IP67 connectors

